

Two new free-floating planet candidates from microlensing

Przemek Mróz^{*1}, Andrzej Udalski¹, David P. Bennett^{2,3}, Yoon-Hyun Ryu⁴, Takahiro Sumi⁵, Yossi Shvartzvald⁶, and,

Jan Skowron¹, Radosław Poleski^{1,7}, Paweł Pietrukowicz¹, Szymon Kozłowski¹, Michał K. Szymański¹, Łukasz Wyrzykowski¹, Igor Soszyński¹, Krzysztof Ulaczyk^{1,8}, Krzysztof Rybicki¹, Patryk Iwanek¹
(The OGLE Collaboration),

Michael D. Albrow⁹, Sun-Ju Chung^{4,10}, Andrew Gould^{4,11,7}, Cheongho Han¹², Kyu-Ha Hwang⁴, Youn Kil Jung⁴, In-Gu Shin¹³, Jennifer C. Yee¹³, Weicheng Zang¹⁴, Sang-Mok Cha^{4,15}, Dong-Jin Kim⁴, Hyoun-Woo Kim⁴, Seung-Lee Kim^{4,10}, Chung-Uk Lee^{4,10}, Dong-Joo Lee⁴, Yongseok Lee^{4,15}, Byeong-Gon Park^{4,10}, Richard W. Pogge⁷ (The KMTNet Collaboration),

Fumio Abe¹⁶, Richard Barry², Aparna Bhattacharya^{2,3}, Ian A. Bond¹⁷, Martin Donachie¹⁸, Akihiko Fukui^{19,20}, Yuki Hirao^{3,5}, Yoshitaka Itow¹⁶, Kohei Kawasaki⁵, Iona Kondo⁵, Naoki Koshimoto^{21,22}, Man Cheung Alex Li¹⁸, Yutaka Matsubara¹⁶, Yasushi Muraki¹⁶, Shota Miyazaki⁵, Masayuki Nagakane⁵, Clément Ranc², Nicholas J. Rattenbury¹⁸, Haruno Suematsu⁵, Denis J. Sullivan²³, Daisuke Suzuki²⁴, Paul J. Tristram²⁵, Atsunori Yonehara²⁶ (The MOA Collaboration), Dan Maoz²⁷, Shai Kaspi²⁷, and Matan Friedmann²⁷ (The Wise Group)

(Affiliations can be found after the references)

Received 2018 XX XX / Accepted 2018 YY YY

ABSTRACT

Planet formation theories predict the existence of free-floating planets, ejected from their parent systems. Although they emit little or no light, they can be detected during gravitational microlensing events. Microlensing events caused by rogue planets are characterized by very short timescales t_E (typically below two days) and small angular Einstein radii θ_E (up to several μas). Here we present the discovery and characterization of two free-floating planet candidates identified in data from the Optical Gravitational Lensing Experiment (OGLE) survey. OGLE-2012-BLG-1323 is one of the shortest events discovered thus far ($t_E = 0.155 \pm 0.005$ d, $\theta_E = 2.37 \pm 0.10 \mu\text{as}$) and was caused by an Earth-mass object in the Galactic disk or a Neptune-mass planet in the Galactic bulge. OGLE-2017-BLG-0560 ($t_E = 0.905 \pm 0.005$ d, $\theta_E = 38.7 \pm 1.6 \mu\text{as}$) was caused by a Jupiter-mass planet in the Galactic disk or a brown dwarf in the bulge. We rule out stellar companions up to the distance of 6.0 and 3.9 au, respectively. We suggest that the lensing objects, whether located on very wide orbits or free-floating, may originate from the same physical mechanism. Although the sample of ultrashort microlensing events is small, these detections are consistent with low-mass wide-orbit or unbound planets being more common than stars in the Milky Way.

Key words. Planets and satellites: detection, Gravitational lensing: micro

1. Introduction

Theories of planet formation predict the existence of free-floating (rogue) planets that are not gravitationally tethered to any host star. These objects could have formed in protoplanetary disks around stars, as “ordinary” planets, and could have been ejected as a result of various mechanisms, including planet-planet dynamical interactions (e.g., Rasio & Ford 1996; Weidenschilling & Marzari 1996; Marzari & Weidenschilling 2002; Chatterjee et al. 2008; Scharf & Menou 2009; Veras et al. 2009), ejections from multiple-star systems (e.g., Kaib et al. 2013; Sutherland & Fabrycky 2016), stellar flybys (e.g., Malmberg et al. 2011; Boley et al. 2012; Veras & Moeckel 2012), dynamical interactions in stellar clusters (e.g., Hurley & Shara 2002; Spurzem et al. 2009; Parker & Quanz 2012; Hao et al. 2013; Liu et al. 2013), or the post-main-sequence evolution of the

host star(s) (e.g., Veras et al. 2011, 2016; Kratter & Perets 2012; Voyatzis et al. 2013).

It is believed that low-mass planets are more likely to be scattered to wide orbits or ejected than giant, Jupiter-mass planets. Calculations of Ma et al. (2016), which are based on the core accretion theory of planet formation, predict that most free-floating planets should be of Earth mass. Rogue planets are more likely to form around FGK-type stars, because they are scattered into wide orbits following close encounters with gas giant planets, which are more likely to form around massive stars. The typical total ejected mass is about $5 - 20 M_{\oplus}$ and about 10-20% of all planetary systems should give rise to rogue planets. Similarly, Barclay et al. (2017), using N-body simulations of terrestrial planet formation around solar-type stars, estimated that about 2.5 terrestrial-mass planets are ejected per star in the Galaxy during late-stage planet formation, but these numbers strongly depend on the adopted initial conditions.

* Corresponding author: pmroz@astrouw.edu.pl

Free-floating planetary-mass objects can also be formed by the fragmentation of gas clouds, in a way similar to that in which stars form. Star formation processes are believed to extend down to $1 - 4 M_{\text{Jup}}$ (Boyd & Whitworth 2005; Whitworth & Stamatellos 2006). That parameter space cannot be probed with the current surveys of young stellar clusters and star-forming regions, which are unable to detect objects less massive than $5 - 6 M_{\text{Jup}}$ (Peña Ramírez et al. 2012; Lodieu et al. 2013; Mužić et al. 2015). Free-floating planetary-mass objects may also form from small molecular cloudlets that have been found in H II regions, although it is unclear whether such clouds may contract (Gahm et al. 2007; Grenman & Gahm 2014).

Gravitational microlensing is the only method that enables one to find Earth-mass free-floating planets. A gravitational microlensing event occurs when a lens (free-floating planet or star) is very closely aligned with a distant source star, with the angular separation smaller than the Einstein radius of the lens $\theta_E = 5 \mu\text{as} \sqrt{M/10 M_{\oplus}} \sqrt{\pi_{\text{rel}}/0.1 \text{ mas}}$ (here, M is the lens mass, $\pi_{\text{rel}} = \pi_l - \pi_s$ is the relative lens-source parallax, and π_l and π_s are parallaxes to the lens and source, respectively). The gravitational field of the lens can focus light rays of the source, causing a transient brightening of the source to an Earth-based observer. As typical lens-source proper motion in the direction of the Galactic center is $\mu_{\text{rel}} = 5 \text{ mas/yr}$, timescales of microlensing events due to Earth-mass lenses are very short $t_E = \theta_E/\mu_{\text{rel}} \approx 10^{-3} \text{ yr} \approx 0.4 \text{ d}$.

Because angular radii of giant source stars in the Galactic bulge $\rho_* = 6 \mu\text{as} (R/10 R_{\odot}) (\pi_s/0.125 \text{ mas})$ are comparable to angular Einstein radii of planetary-mass lenses, light curves of giant-source events attributed to free-floating planets should exhibit strong finite source effects (as each point on the source surface is magnified by a different amount). Detection of the finite source effects in the light curve allows one to measure θ_E , that can place additional constraints on the mass of the lens. Direct calculations of the lens mass require additional information on π_{rel} , but the parallax measurement is challenging for such short events (see Introduction in Mróz et al. 2018).

Microlensing events with timescales shorter than 2 d have been traditionally attributed to unbound planets. A statistical analysis of 474 events discovered by the Microlensing Observations in Astrophysics (MOA) group led to the claim of an excess of events with timescales 1–2 d (corresponding to Jupiter-mass lenses) and the suggestion that they are caused by a sizable population of Jupiter-mass wide-orbit or free-floating planets (Sumi et al. 2011). The analysis of a larger data set collected during the years 2010–2015 of the fourth phase of the Optical Gravitational Lensing Experiment (OGLE-IV) did not confirm these findings (Mróz et al. 2017). Mróz et al. (2017) found a 95% upper limit on the frequency of Jupiter-mass rogue planets in the Milky Way of 0.25 per star. They detected, however, a few very short events ($t_E < 0.5 \text{ d}$), which could be attributed to Earth- and super-Earth-mass free-floating planets. Their sampling was, however, insufficient to detect finite source effects. See Mróz et al. (2017) and Mróz et al. (2018) for a detailed discussion.

The only known ultrashort microlensing event that exhibited prominent finite sources effects, OGLE-2016-BLG-1540, was identified by Mróz et al. (2018) in the OGLE data from the 2016 observing season. This event was likely caused by a Neptune-mass free-floating planet, as inferred

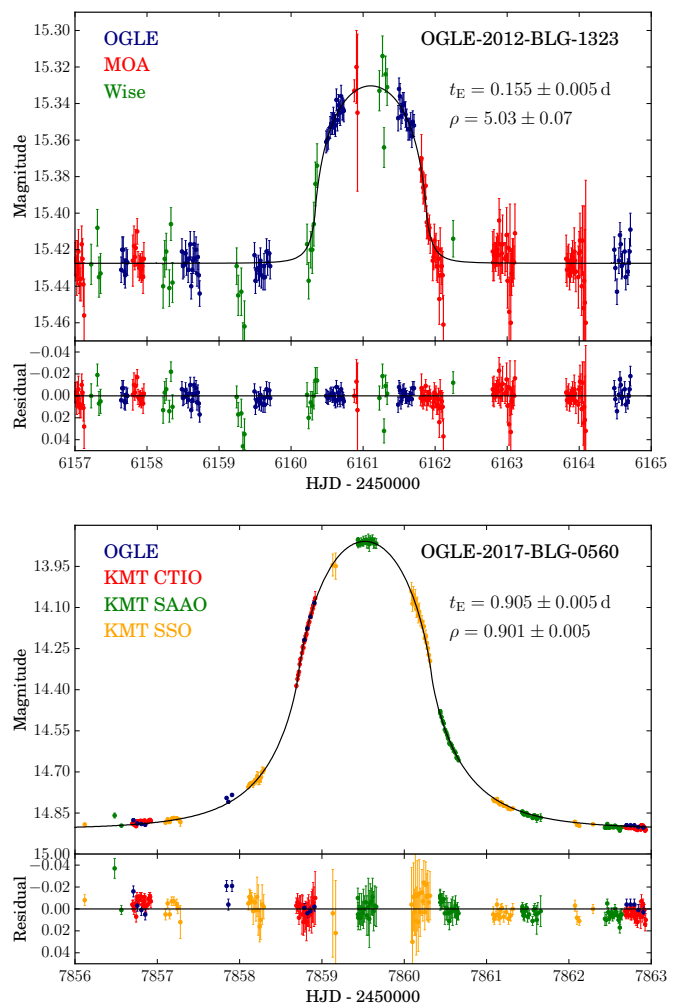


Fig. 1. Light curves of two ultrashort microlensing events. Upper panel: OGLE-2012-BLG-1323. Lower panel: OGLE-2017-BLG-0560. Both events show strong finite-source effects, which allows us to measure their angular Einstein radii.

from the measurement of the angular Einstein radius. Encouraged by that discovery, we searched for short-timescale microlensing events in the OGLE data from the 2017 season and complemented them with photometric observations from the Korea Microlensing Telescope Network (KMT-Net). We also searched for short-duration microlensing events with giant sources in the archival OGLE data collected during the 2010–2015 period.

Here, we report the discovery and characterization of two microlensing events, OGLE-2012-BLG-1323 and OGLE-2017-BLG-0560, which can be attributed to free-floating planets. We show that, although the sample of these events is small, these detections are consistent with terrestrial-mass wide-orbit or unbound planets being more common than stars in the Milky Way.

2. Observations

Microlensing event OGLE-2017-BLG-0560 was announced on 2017 Apr 16 by the OGLE Early Warning System (Udalski 2003). This event was located at equatorial coordinates of R.A. = $17^{\text{h}}51^{\text{m}}51^{\text{s}}33$, Decl. = $-30^{\circ}27'31''.4$ (J2000.0) in the field BLG534 that was observed with a cadence of 60

Table 1. Short-timescale microlensing events exhibiting finite source effects

Parameter	OGLE-2012-BLG-1323	OGLE-2017-BLG-0560	OGLE-2016-BLG-1540
Microlensing model:			
t_0 (HJD')	6161.107 ± 0.008	7859.523 ± 0.003	7606.726 ± 0.002
t_E (days)	0.155 ± 0.005	0.905 ± 0.005	0.320 ± 0.003
u_0	$0.63^{+0.64}_{-0.44}$	$0.105^{+0.031}_{-0.045}$	0.53 ± 0.04
ρ	5.03 ± 0.07	0.901 ± 0.005	1.65 ± 0.01
I_s	15.43 ± 0.05	14.91 ± 0.05	14.76 ± 0.05
f_s	1.00 (fixed)	1.00 (fixed)	1.00 (fixed)
Source star:			
$I_{S,0}$	14.09 ± 0.06	12.47 ± 0.05	13.51 ± 0.09
$(V - I)_{S,0}$	1.73 ± 0.02	2.31 ± 0.02	1.67 ± 0.02
$(V - K)_{S,0}$	3.77 ± 0.03	4.73 ± 0.06	3.67 ± 0.03
T_{eff} (K)	3800 ± 200	3600 ± 200	3900 ± 200
Γ (limb darkening, I band)	0.40	0.41	0.36
Λ (limb darkening, I band)	0.30	0.28	0.34
θ_* (μas)	11.9 ± 0.5	34.9 ± 1.5	15.1 ± 0.8
Physical parameters:			
θ_E (μas)	2.37 ± 0.10	38.7 ± 1.6	9.2 ± 0.5
$\mu_{\text{rel,geo}}$ (mas yr^{-1})	5.6 ± 0.3	15.6 ± 0.7	10.5 ± 0.6

Notes. HJD' = HJD - 2450000. $f_s = F_s / (F_s + F_b)$ is the blending parameter. Parameters for OGLE-2016-BLG-1540 are shown for comparison and are taken from Mróz et al. (2018).

minutes. The OGLE survey operates from Las Campanas Observatory, Chile, and uses a dedicated 1.3-m Warsaw Telescope, equipped with a mosaic CCD camera with a field of view of 1.4 deg^2 (see Udalski et al. 2015 for details of the survey).

This event was also observed by three identical 1.6-m telescopes from the KMT Network (Kim et al. 2016), which are located in Cerro Tololo Inter-American Observatory (CTIO; Chile), South African Astronomical Observatory (SAAO; South Africa), and Siding Spring Observatory (SSO; Australia). The event was located in the two overlapping fields BLG01 and BLG41, each one was observed with a cadence of 30 minutes. For the modeling, we used observations collected between March 7 and May 26, 2017.

The second event analyzed in this paper, OGLE-2012-BLG-1323, was also discovered by the OGLE Early Warning System, on 2012 Aug 21. This event is located at equatorial coordinates of R.A. = $18^{\text{h}}00^{\text{m}}18^{\text{s}}51$, Decl. = $-28^{\circ}35'01''.7$ (J2000.0) in the field BLG512, which was monitored with a cadence of 20 minutes. This event was not previously identified as a free-floating planet candidate (Mróz et al. 2017), owing to its extremely low amplitude (below 0.1 mag).

We supplement OGLE observations with the data from MOA (Bond et al. 2001) and Wise groups (Shvartzvald et al. 2016). MOA observations were collected using the 1.8 m telescope at Mt. John University Observatory in New Zealand (Sumi et al. 2013). Wise observations were taken with the 1-m telescope at Wise Observatory in Israel equipped with the LAIWO camera.

All data were taken in the I band (except MOA data; the MOA group uses a custom wide filter, which is effectively the sum of the standard R and I filters). Photometry was extracted using custom implementations of the difference image analysis technique: Woźniak (2000; OGLE), Albrow (2017; KMTNet and Wise), Bond et al. (2001; MOA).

3. Light Curves Modeling

Light curves of both events are well described by the extended-source point-lens model (Fig. 1), which is defined by four parameters: t_0 (time of the closest lens-source approach), u_0 (impact parameter in Einstein radius units), t_E (event time scale), and $\rho = \theta_*/\theta_E$ (normalized radius of the source, i.e., the ratio of the angular radius of the source θ_* to the angular Einstein radius θ_E). Two additional parameters (for each observatory and filter) are needed to describe the source star flux (F_s) and unmagnified flux of the blend (F_b). When the blend flux is allowed to vary, the best-fit solutions are characterized by negative blending ($F_b < 0$). We therefore, following the approach of Mróz et al. (2018), keep $F_b = 0$ constant, but we also add in quadrature 0.05 mag to the uncertainty of the source brightness.

The best-fit parameters and their uncertainties are shown in Table 1. The uncertainties are estimated using the Markov chain Monte Carlo technique (Foreman-Mackey et al. 2013) and represent 68% confidence intervals of marginalized posterior distributions.

To describe the brightness profile of the source star, we adopt the square-root limb-darkening law, described by two parameters Γ and Λ (which are filter-dependent; Yoo et al. 2004). If allowed to vary, Γ and Λ are strongly correlated. We thus keep limb-darkening coefficients constant, using the limb-darkening models of Claret & Bloemen (2011) (see Table 1 for their numerical values). We use ATLAS models and assume a solar metallicity, microturbulent velocity of 2 km/s and surface gravity of $\log g = 2.0$ (Γ and Λ are weakly dependent on $\log g$ if $\log g \leq 2.0$), as appropriate for giant sources.

The archival light curve of OGLE-2017-BLG-0560 shows low-amplitude (0.02 mag), semi-regular variability that is typical of OGLE small amplitude red giants (Wray et al. 2004). The strongest pulsation period in the 2017 data is 18.9 d. As the effective duration of the event (3 days) is much shorter than the pulsation period, we expect that

the inferred model parameters should not be strongly influenced by the variability of the source. Indeed, additional modeling, in which we assume that the flux of the source varies sinusoidally with a period of 18.9 d, results in almost identical microlensing parameters (within the error bars) to those of the model with the constant source.

We also searched for terrestrial parallax (Gould et al. 2009; Yee et al. 2009; Freeman et al. 2015) signal in the light curve of OGLE-2012-BLG-1323, but the χ^2 improvement is insignificant ($\Delta\chi^2 = 1$) and the limits on the microlens parallax are very poor. We did not fit the parallax model to the light curve of OGLE-2017-BLG-0560, because of the low-level variability of the source.

Finally, we also searched for possible binary lens models. Short-duration events may be caused by close binary lenses (when the projected separation s , in Einstein radius units, is much smaller than 1), when the source crosses a small triangle-shaped caustic that is far ($\sim 1/s$) from the center-of-mass. The expected light curves are asymmetric, unless the source is larger than the caustic. In that case, the light curve may superficially look like extended-source point-lens event, except that it has more extended tails. We found that the best-fitting close binary models are disfavored by $\Delta\chi^2$ of several hundred for OGLE-2012-BLG-1323 and even more for OGLE-2017-BLG-0560. The latter event has large amplitude (≈ 1 mag), but the peak magnification in close binary models is usually much lower than that, unless the source is small ($\rho < 0.001$) and the light curve is asymmetric. We cannot rule out that the lens is a wide-orbit planet, we discuss such cases in Section 4.3.

4. Physical Parameters

4.1. Source Stars

Model parameters can be translated into physical parameters of the lens provided that the angular radius of the source star is known. Here we use a standard technique (Yoo et al. 2004) of measuring the offset of the source from the centroid of red clump giants in the calibrated color-magnitude diagram in a $2' \times 2'$ region around the event (about $5 \text{ pc} \times 5 \text{ pc}$ at the Galactic center distance; Figure 2). Because we lack color observations collected during both events, our best estimate for the color of the source is the color of the baseline star. This is further supported by the lack of evidence for blending in the I -band light curves and the low probability of having bright unmagnified blends. As the intrinsic color (Bensby et al. 2011) and dereddened brightness of the red clump (Nataf et al. 2013) are known toward a given direction, we are able to calculate dereddened color and brightness of the source. Subsequently, we use color-color (Bessell & Brett 1988) and color-surface brightness (Kervella et al. 2004) relations for giants to measure the angular radius of the source star¹. We also use

¹ As both sources are very red, it is important to determine how well the empirical color-surface brightness (CSB) relations are calibrated in this range. The relation of Kervella et al. (2004) was derived for giants with colors $0.9 < (V - K)_0 < 2.5$, but it agrees well with the earlier relation by Fouque & Gieren (1997), which is valid in a larger color range. Groenewegen (2004) published a CSB relation for M-giants ($3.2 < (V - K)_0 < 6.1$), which gives angular radii that are systematically 10% lower than those based on Kervella et al. (2004): $\theta_* = 10.9 \pm 0.7 \mu\text{as}$ (OGLE-2012-BLG-1323) and $\theta_* = 29.8 \pm 1.9 \mu\text{as}$ (OGLE-2017-BLG-0560). Adams

color-temperature relations of Houdashelt et al. (2000a,b) and Ramírez & Meléndez (2005) to estimate the effective temperature of the source. The angular Einstein radius is $\theta_E = \theta_*/\rho$ and the relative lens-source proper motion (in the geocentric frame) is $\mu_{\text{rel,geo}} = \theta_E/t_E$. The heliocentric correction ($v_{\oplus,\perp}\pi_{\text{rel}}/\text{au}$, where $v_{\oplus,\perp}$ is the Earth's velocity projected on the sky), which should be added vectorially, is of the order of $3\pi_{\text{rel}}\text{yr}^{-1}$ and is negligible unless the lens is nearby (closer than 1 kpc from the Sun). The physical parameters of the source star and lens are given in Table 1.

4.2. Proper Motion of Source Stars

Because source stars are bright and lenses contribute little (if any) light, absolute proper motions of sources can be found in the second *Gaia* data release (DR2) (Gaia Collaboration et al. 2016, 2018). One has to remember, however, that the *Gaia* performance in the crowded regions of the Galactic center is poor, especially for faint sources. Figure 3 shows proper motions of stars located within $4'$ from the sources. In both cases source proper motions are consistent with those of Galactic bulge stars (represented by red clump and red giant branch stars), although proper motions measured relative to the mean velocity of bulge are high. This contributes to the high relative lens-source proper motion of OGLE-2017-BLG-0560 and its very short timescale.

4.3. Constraints on the Host Star

If the trajectory of the source passed near a putative host star, we would detect additional anomalies in the light curves of both events. As we have not found any, we are able to provide only lower limits on the projected star-planet separation, using the method of Mróz et al. (2018). In short, the description of a binary lens requires three additional parameters: mass ratio q , separation s (in Einstein radius units), and angle α between the source trajectory and binary axis. We consider a $0.3 M_\odot$ host located either in the Galactic disk ($\pi_{\text{rel}} = 0.1 \text{ mas}$) or in the bulge ($\pi_{\text{rel}} = 0.01 \text{ mas}$), which corresponds to $\theta_{E,\text{host}} = 0.49 \text{ mas}$ or 0.16 mas , respectively. Then, for each pair of mass ratio $q = \sqrt{\theta_E/\theta_{E,\text{host}}}$ and separation s , we simulate 180 OGLE light curves (spanning from 2010 March 4, through 2017 October 30) with uniformly distributed α and calculate the fraction of light curves that show signatures of the putative host star (see Fig. 4). For OGLE-2012-BLG-1323 we find a 90% lower limits of 11.8 au for the disk case (4.9 Einstein radii of the host) and 6.0 au for the bulge host (4.5 Einstein radii of the host). The formal 90% limits for OGLE-2017-BLG-0560 are 9.3 au and 3.9 au, respectively, but the sensitivity to additional anomalies in the light curve is reduced, owing to low-level variability of the source.

5. Discussion

The two microlensing events presented in this paper and OGLE-2016-BLG-1540 (Mróz et al. 2018) share a number of similarities (Table 1). All events occurred on bright giant stars (with estimated angular radii of $9.2 - 34.9 \mu\text{as}$)

et al. (2018) recently published a new CSB relation for giants ($-0.01 < (V - I)_0 < 1.74$), from which we find $\theta_* = 11.5 \pm 0.9 \mu\text{as}$ (OGLE-2012-BLG-1323) and $\theta_* = 32.3 \pm 2.3 \mu\text{as}$ (OGLE-2017-BLG-0560), in good agreement with our determination.

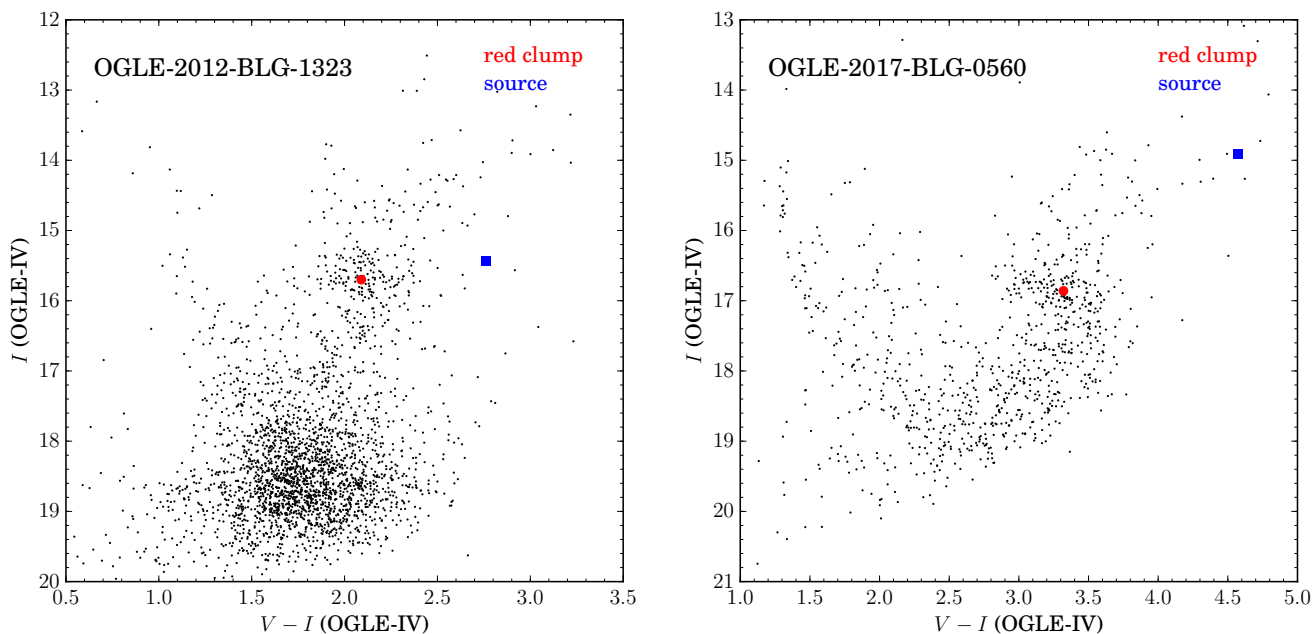


Fig. 2. The OGLE-IV color–magnitude diagrams for stars in $2' \times 2'$ regions around OGLE-2012-BLG-1323 and OGLE-2017-BLG-0560. Sources are marked with blue squares and are likely located in the Galactic bulge. If sources were M-dwarfs, they would have absolute I -band magnitudes of 9.75 (OGLE-2012-BLG-1323) and 13.90 (OGLE-2017-BLG-0560) (Pecaut & Mamajek 2013) and would be located at the distance of 140 pc and 16 pc, respectively, which contradicts *Gaia* DR2 parallaxes (0.15 ± 0.14 mas and 0.23 ± 0.19 mas, respectively).

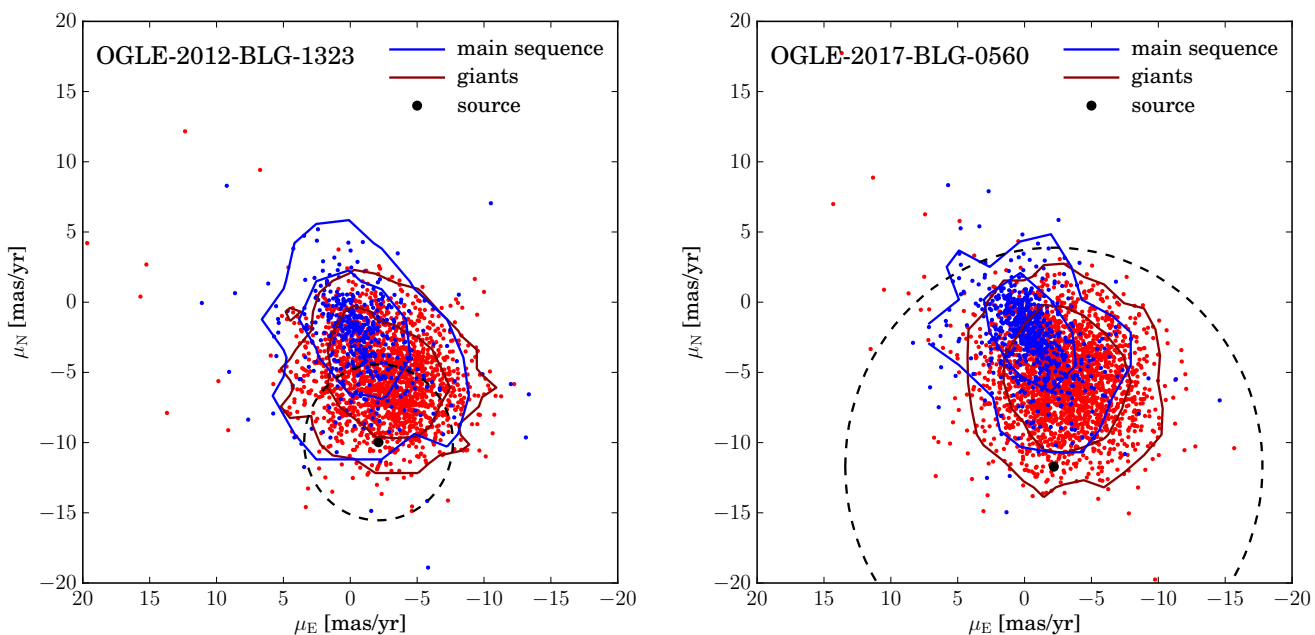


Fig. 3. *Gaia* DR2 proper motions of stars within $4'$ of OGLE-2012-BLG-1323 (left diagram) and OGLE-2017-BLG-0560 (right diagram). Blue contours correspond to the main-sequence stars (Galactic disk population) and red contours to giants (bulge population). Solid contours enclose 68% and 95% of all objects. The source is marked with a black dot. The black dashed circle corresponds to the relative source-lens proper motion of 5.6 mas/yr (left) and 15.6 mas/yr (right).

and their relative lens-source proper motions are high (5.6 – 15.6 mas/yr). All three events show prominent finite source effects, which led to the measurement of the angular Einstein radius. The fact that all three events occurred on bright, large sources is surprising, as less than 3% of all known events are found with sources brighter

than $I = 16$ mag. Moreover, the microlensing event rate Γ is proportional to the area of the sky swept by the Einstein ring: $\Gamma \propto \theta_E \mu_{\text{rel}}$. The high lens-source relative proper motion makes an event more likely to be found, but events with $\mu_{\text{rel}} > 10$ mas yr $^{-1}$ are very rare (Han et al. 2017).

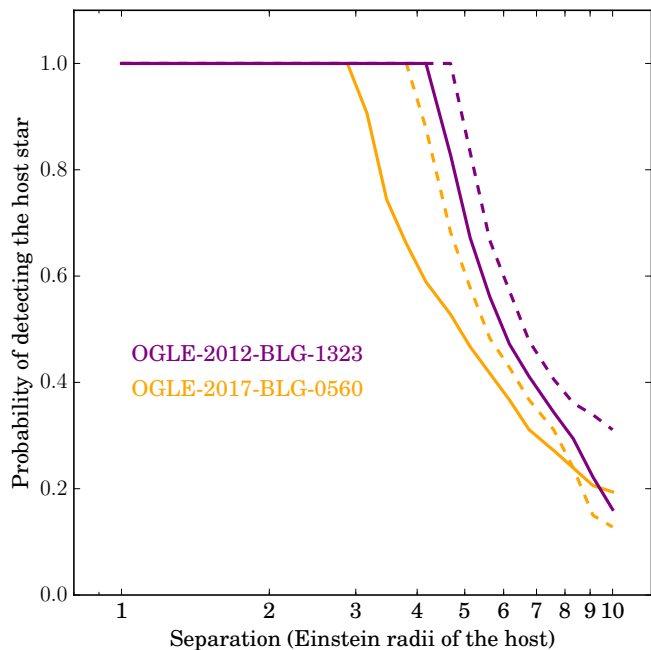


Fig. 4. Probability of detecting the putative host star as function of star-planet separation. Solid curves correspond to the lens located in the Galactic bulge ($\pi_{\text{rel}} = 0.01$ mas) and dashed curves to the lens in the Galactic disk ($\pi_{\text{rel}} = 0.1$ mas).

Strong finite source effects make the duration of an event longer, especially if $\rho \gg 1$, which makes giant source events easier to detect. The typical timescale t_* of such event is comparable to the time needed for the lens to cross the chord of the source:

$$t_* = 2t_E \rho \sqrt{1 - \left(\frac{u_0}{\rho}\right)^2}. \quad (1)$$

Monitoring of giant-star microlensing events, as advocated by the “Hollywood” strategy of Gould (1997), is therefore a promising way of studying free-floating planets.

On the other hand, the peak magnification A_{peak} in the absence of blending declines with the source size (Gould & Gauchere 1997):

$$A_{\text{peak}} \approx 1 + \frac{2}{\rho^2} \quad (\text{for } \rho \gg 1). \quad (2)$$

The OGLE Early Warning System alerts events that brighten by at least 0.06 mag (Udalski 2003), which corresponds to $\rho \lesssim 6$, but the search algorithm of Mróz et al. (2017) is sensitive to lower magnifications. Equation (1) also explains why the impact parameter of OGLE-2012-BLG-1323 is poorly measured (cf. Table 1): for large sources ($\rho = 5$), changing the impact parameter from $u_0 = 0$ to $u_0 = 1$ leads to the increase of t_E by only 2%, which is already included in the reported uncertainties.

The mass of the lens depends on the angular Einstein radius θ_E and the relative parallax π_{rel} :

$$M = \frac{\theta_E^2}{\kappa \pi_{\text{rel}}}. \quad (3)$$

For both events, the masses cannot be unambiguously determined because the microlens parallaxes cannot be measured. For lenses located in the Galactic disk ($\pi_{\text{rel}} \approx$

0.1 mas) the masses are $2.3 M_{\oplus}$ and $1.9 M_{\text{Jup}}$ for OGLE-2012-BLG-1323 and OGLE-2017-BLG-0560, respectively. If the lenses are located in the Galactic bulge ($\pi_{\text{rel}} \approx 0.01$ mas), they have larger masses of about $23 M_{\oplus}$ or $20 M_{\text{Jup}}$, respectively.

The mass of the lens can be further constrained by employing the Bayesian analysis. If we assume a Galactic model and a mass function of lenses, we can estimate the mass of the lens that most likely reproduces the observations (Einstein radius and proper motion) given the model. However, as we probe extreme events, one must be cautious that the inferred masses will depend on priors that may be derived from data on objects whose properties lie well beyond the range of those being probed. We use the Galactic model of Bennett et al. (2014) and two planetary mass functions as the prior. The first mass function ($dN/dM \propto M^{-1.3}$), taken from Sumi et al. (2011), overpredicts the number of short-timescale events (Mróz et al. 2017). The second one ($dN/dM \propto M^{-1.8}$) is steeper, which is consistent with the findings of Clanton & Gaudi (2016) and Suzuki et al. (2016), and better describes the event timescale distribution of Mróz et al. (2017). The posterior distributions favor Galactic bulge lenses, but the allowed range of masses is very broad, see Table 2. The median masses of the Bayesian results:

$$M = (0.038, 1.5, 100) M_{\text{Jup}},$$

when combined with the angular Einstein radius values in Table 1,

$$\theta_E = (2.37, 9.2, 38.7) \mu\text{as},$$

correspond to lens-source relative parallaxes of

$$\pi_{\text{rel}} = (0.019, 0.007, 0.002) \text{ mas}$$

for the three events OGLE-2012-BLG-1323, OGLE-2016-BLG-1540, and OGLE-2017-BLG-0560, respectively.

The ultrashort timescale event OGLE-2012-BLG-1323 ($t_E = 0.155 \pm 0.005$ d) is almost certainly caused by a planetary-mass (Earth- to super-Earth-mass) object, while the mass of OGLE-2016-BLG-1540 ($t_E = 0.320 \pm 0.003$ d) is poorly constrained. The rate of events due to brown dwarfs and stars with timescales shorter than 0.32 d (0.155 d) is just 10^{-5} (5×10^{-7}) of the total event rate (Mróz et al. 2017).

It is not possible to determine, without further high-resolution follow-up observations, whether or not these planets are free-floating or located at very wide orbits. Owing to their high relative lens-source proper motions, such searches will be possible in the near future with current instruments or next-generation telescopes (Gould 2016). As the sources are bright, separations of ~ 100 mas are required to resolve the putative host stars; such separations will be reached in late 2020s.

Presently, there are no observational constraints on the frequency of bound Earth- and super-Earth-mass wide-orbit planets, as their detection is challenging with the current techniques. For example, Poleski et al. (2014) found a $4 M_{\text{Uranus}}$ planet at projected separation of 5.3 Einstein radii and Sumi et al. (2016) discovered a Neptune analog at projected separation of 2.4 Einstein radii. Planet-formation theories, such as the core accretion model (Ida & Lin 2004), predict very few low-mass planets at wide orbits, because the density of solids and gas in a protoplanetary disk is very low at such large separations. It is believed that Uranus and

Table 2. Posterior distributions for the lens mass calculated from the Bayesian analysis

Percentile	2.3th	15.9th	50.0th	84.1th	97.7th
Prior 1:					
OGLE-2012-BLG-1323	$1.2M_{\oplus}$	$5.0M_{\oplus}$	$12M_{\oplus}$	$47M_{\oplus}$	$480M_{\oplus}$
OGLE-2017-BLG-0560	$5.7M_{\text{Jup}}$	$24M_{\text{Jup}}$	$100M_{\text{Jup}}$	$0.40M_{\odot}$	$0.75M_{\odot}$
OGLE-2016-BLG-1540	$22M_{\oplus}$	$110M_{\oplus}$	$1.5M_{\text{Jup}}$	$47M_{\text{Jup}}$	$58M_{\text{Jup}}$
Prior 2:					
OGLE-2012-BLG-1323	$3.8M_{\oplus}$	$7.8M_{\oplus}$	$30M_{\oplus}$	$240M_{\oplus}$	$990M_{\oplus}$
OGLE-2017-BLG-0560	$1.1M_{\text{Jup}}$	$13M_{\text{Jup}}$	$77M_{\text{Jup}}$	$0.35M_{\odot}$	$0.74M_{\odot}$
OGLE-2016-BLG-1540	$32M_{\oplus}$	$120M_{\oplus}$	$2M_{\text{Jup}}$	$40M_{\text{Jup}}$	$53M_{\text{Jup}}$

Notes. We use the Galactic model of Bennett et al. (2014) and the planetary mass function $dN/dM \propto M^{-1.8}$ (prior 1) or $dN/dM \propto M^{-1.3}$ (prior 2).

Neptune formed closer to the Sun, near Jupiter and Saturn, and were subsequently scattered into wide orbits (Thommes et al. 1999, 2002). Likewise, multiple protoplanets of up to a few Earth masses can be scattered to wide orbits and eventually ejected by growing gas giants (e.g., Chatterjee et al. 2008; Izidoro et al. 2015; Bromley & Kenyon 2016; Silsbee & Tremaine 2018). From the point of view of microlensing observations, these objects, whether bound or free-floating, are in practice indistinguishable.

While making statistical inferences out of such a small sample of events is risky, we show that these detections are consistent with low-mass lenses being common in the Milky Way, unless the fact that events occurred on bright giant stars is just a coincidence. According to models presented by Mróz et al. (2017), about 2.8×10^{-3} of all events should be caused by Earth- and super-Earth-mass lenses (with timescales $t_E < 0.5$ d) if there were one such object per each star. About 50 events with giant sources brighter than $I = 16$ are found in OGLE high-cadence fields annually, thus we expect to find $2.8 \times 10^{-3} \times 50 = 0.1$ very short microlensing events with giant sources annually (about one event during the entire OGLE-IV timespan) if the probability of detection was the same for events due to free-floating planets and stars. In reality, the detection efficiency for bright events with timescales of $O(1)$ d is a factor 2 – 4 lower than for stellar events (Mróz et al. 2017). Thus, our findings support conclusions of Mróz et al. (2017) that such Earth-mass free-floating (or wide-orbit) planets are more common than stars in the Milky Way.

Acknowledgements. P.M. acknowledges support from the Foundation for Polish Science (Program START) and the National Science Center, Poland (grant ETIUDA 2018/28/T/ST9/00096). The OGLE project has received funding from the National Science Center, Poland, grant MAESTRO 2014/14/A/ST9/00121 to A.U. Work by AG was supported by AST-1516842 from the US NSF. IGS and AG were supported by JPL grant 1500811. AG received support from the European Research Council under the European Union’s Seventh Framework Programme (FP 7) ERC Grant Agreement n. [321035]. This research has made use of the KMTNet system operated by the Korea Astronomy and Space Science Institute (KASI) and the data were obtained at three host sites of CTIO in Chile, SAAO in South Africa, and SSO in Australia. Work by C.H. was supported by the grant (2017R1A4A1015178) of National Research Foundation of Korea. The MOA project is supported by JSPS KAKENHI Grant Number JSPS24253004, JSPS26247023, JSPS23340064, JSPS15H00781, and JP16H06287. This research was supported by the I-CORE programme of the Planning and Budgeting Committee and the Israel Science Foundation, Grant 1829/12. DM and AG acknowledge support by the US-Israel Binational Science Foundation.

References

- Adams, A. D., Boyajian, T. S., & von Braun, K. 2018, *MNRAS*, 473, 3608
- Albrow, M. 2017, MichaelDALBrow/pyDIA: Initial Release on Github.
- Barclay, T., Quintana, E. V., Raymond, S. N., & Penny, M. T. 2017, *ApJ*, 841, 86
- Bennett, D. P., Batista, V., Bond, I. A., et al. 2014, *ApJ*, 785, 155
- Bensby, T., Adén, D., Meléndez, J., et al. 2011, *A&A*, 533, A134
- Bessell, M. S. & Brett, J. M. 1988, *PASP*, 100, 1134
- Boley, A. C., Payne, M. J., & Ford, E. B. 2012, *ApJ*, 754, 57
- Bond, I. A., Abe, F., Dodd, R. J., et al. 2001, *MNRAS*, 327, 868
- Boyd, D. F. A. & Whitworth, A. P. 2005, *A&A*, 430, 1059
- Bromley, B. C. & Kenyon, S. J. 2016, *ApJ*, 826, 64
- Chatterjee, S., Ford, E. B., Matsumura, S., & Rasio, F. A. 2008, *ApJ*, 686, 580
- Clanton, C. & Gaudi, B. S. 2016, *ApJ*, 819, 125
- Claret, A. & Bloemen, S. 2011, *A&A*, 529, A75
- Foreman-Mackey, D., Hogg, D. W., Lang, D., & Goodman, J. 2013, *PASP*, 125, 306
- Fouque, P. & Gieren, W. P. 1997, *A&A*, 320, 799
- Freeman, M., Philpott, L. C., Abe, F., et al. 2015, *ApJ*, 799, 181
- Gahm, G. F., Grenman, T., Fredriksson, S., & Kristen, H. 2007, *AJ*, 133, 1795
- Gaia Collaboration, Brown, A. G. A., Vallenari, A., et al. 2018, *A&A*, 616, A1
- Gaia Collaboration, Prusti, T., de Bruijne, J. H. J., et al. 2016, *A&A*, 595, A1
- Gould, A. 1997, in *Variables Stars and the Astrophysical Returns of the Microlensing Surveys*, ed. R. Ferlet, J.-P. Maillard, & B. Raban, 125
- Gould, A. 2016, *Journal of Korean Astronomical Society*, 49, 123
- Gould, A. & Gaucheron, C. 1997, *ApJ*, 477, 580
- Gould, A., Udalski, A., Monard, B., et al. 2009, *ApJ*, 698, L147
- Grenman, T. & Gahm, G. F. 2014, *A&A*, 565, A107
- Groenewegen, M. A. T. 2004, *MNRAS*, 353, 903
- Han, C., Udalski, A., Sumi, T., et al. 2017, *ApJ*, 843, 59
- Hao, W., Kouwenhoven, M. B. N., & Spurzem, R. 2013, *MNRAS*, 433, 867
- Houdashelt, M. L., Bell, R. A., & Sweigart, A. V. 2000a, *AJ*, 119, 1448
- Houdashelt, M. L., Bell, R. A., Sweigart, A. V., & Wing, R. F. 2000b, *AJ*, 119, 1424
- Hurley, J. R. & Shara, M. M. 2002, *ApJ*, 565, 1251
- Ida, S. & Lin, D. N. C. 2004, *ApJ*, 604, 388
- Izidoro, A., Morbidelli, A., Raymond, S. N., Hersant, F., & Pierens, A. 2015, *A&A*, 582, A99
- Kaib, N. A., Raymond, S. N., & Duncan, M. 2013, *Nature*, 493, 381
- Kervella, P., Bersier, D., Mourard, D., et al. 2004, *A&A*, 428, 587
- Kim, S.-L., Lee, C.-U., Park, B.-G., et al. 2016, *Journal of Korean Astronomical Society*, 49, 37
- Kratter, K. M. & Perets, H. B. 2012, *ApJ*, 753, 91
- Liu, H.-G., Zhang, H., & Zhou, J.-L. 2013, *ApJ*, 772, 142
- Lodieu, N., Dobbie, P. D., Cross, N. J. G., et al. 2013, *MNRAS*, 435, 2474
- Ma, S., Mao, S., Ida, S., Zhu, W., & Lin, D. N. C. 2016, *MNRAS*, 461, L107
- Malmberg, D., Davies, M. B., & Hogg, D. C. 2011, *MNRAS*, 411, 859
- Marzari, F. & Weidenschilling, S. J. 2002, *Icarus*, 156, 570

- Mróz, P., Ryu, Y.-H., Skowron, J., et al. 2018, *AJ*, 155, 121
- Mróz, P., Udalski, A., Skowron, J., et al. 2017, *Nature*, 548, 183
- Mužič, K., Scholz, A., Geers, V. C., & Jayawardhana, R. 2015, *ApJ*, 810, 159
- Nataf, D. M., Gould, A., Fouqué, P., et al. 2013, *ApJ*, 769, 88
- Parker, R. J. & Quanz, S. P. 2012, *MNRAS*, 419, 2448
- Peña Ramírez, K., Béjar, V. J. S., Zapatero Osorio, M. R., Petr-Gotzens, M. G., & Martín, E. L. 2012, *ApJ*, 754, 30
- Pecaut, M. J. & Mamajek, E. E. 2013, *ApJS*, 208, 9
- Poleski, R., Skowron, J., Udalski, A., et al. 2014, *ApJ*, 795, 42
- Ramírez, I. & Meléndez, J. 2005, *ApJ*, 626, 465
- Rasio, F. A. & Ford, E. B. 1996, *Science*, 274, 954
- Scharf, C. & Menou, K. 2009, *ApJ*, 693, L113
- Shvartzvald, Y., Maoz, D., Udalski, A., et al. 2016, *MNRAS*, 457, 4089
- Silberstein, K. & Tremaine, S. 2018, *AJ*, 155, 75
- Spurzem, R., Giersz, M., Hogg, D. C., & Lin, D. N. C. 2009, *ApJ*, 697, 458
- Sumi, T., Bennett, D. P., Bond, I. A., et al. 2013, *ApJ*, 778, 150
- Sumi, T., Kamiya, K., Bennett, D. P., et al. 2011, *Nature*, 473, 349
- Sumi, T., Udalski, A., Bennett, D. P., et al. 2016, *ApJ*, 825, 112
- Sutherland, A. P. & Fabrycky, D. C. 2016, *ApJ*, 818, 6
- Suzuki, D., Bennett, D. P., Sumi, T., et al. 2016, *ApJ*, 833, 145
- Thommes, E. W., Duncan, M. J., & Levison, H. F. 1999, *Nature*, 402, 635
- Thommes, E. W., Duncan, M. J., & Levison, H. F. 2002, *AJ*, 123, 2862
- Udalski, A. 2003, *Acta Astron.*, 53, 291
- Udalski, A., Szymański, M. K., & Szymański, G. 2015, *Acta Astron.*, 65, 1
- Veras, D., Crepp, J. R., & Ford, E. B. 2009, *ApJ*, 696, 1600
- Veras, D. & Moeckel, N. 2012, *MNRAS*, 425, 680
- Veras, D., Mustill, A. J., Gänsicke, B. T., et al. 2016, *MNRAS*, 458, 3942
- Veras, D., Wyatt, M. C., Mustill, A. J., Bonsor, A., & Eldridge, J. J. 2011, *MNRAS*, 417, 2104
- Voyatzis, G., Hadjidemetriou, J. D., Veras, D., & Varvoglis, H. 2013, *MNRAS*, 430, 3383
- Weidenschilling, S. J. & Marzari, F. 1996, *Nature*, 384, 619
- Whitworth, A. P. & Stamatellos, D. 2006, *A&A*, 458, 817
- Woźniak, P. R. 2000, *Acta Astron.*, 50, 421
- Wray, J. J., Eyer, L., & Paczyński, B. 2004, *MNRAS*, 349, 1059
- Yee, J. C., Udalski, A., Sumi, T., et al. 2009, *ApJ*, 703, 2082
- Yoo, J., DePoy, D. L., Gal-Yam, A., et al. 2004, *ApJ*, 603, 139
-
- ¹ Warsaw University Observatory, Al. Ujazdowskie 4, 00-478 Warszawa, Poland
- ² Code 667, NASA Goddard Space Flight Center, Greenbelt, MD 20771, USA
- ³ Department of Astronomy, University of Maryland, College Park, MD 20742, USA
- ⁴ Korea Astronomy and Space Science Institute, Daejeon 34055, Republic of Korea
- ⁵ Department of Earth and Space Science, Graduate School of Science, Osaka University, Toyonaka, Osaka 560-0043, Japan
- ⁶ IPAC, Mail Code 100-22, Caltech, 1200 E. California Blvd., Pasadena, CA 91125, USA
- ⁷ Department of Astronomy, Ohio State University, 140 W. 18th Ave., Columbus, OH 43210, USA
- ⁸ Department of Physics, University of Warwick, Coventry CV4 7AL, UK
- ⁹ University of Canterbury, Department of Physics and Astronomy, Private Bag 4800, Christchurch 8020, New Zealand
- ¹⁰ Korea University of Science and Technology, Daejeon 34113, Republic of Korea
- ¹¹ Max-Planck-Institute for Astronomy, Königstuhl 17, 69117 Heidelberg, Germany
- ¹² Department of Physics, Chungbuk National University, Cheongju 28644, Republic of Korea
- ¹³ Harvard-Smithsonian Center for Astrophysics, 60 Garden St., Cambridge, MA 02138, USA
- ¹⁴ Physics Department and Tsinghua Centre for Astrophysics, Tsinghua University, Beijing 100084, China
- ¹⁵ School of Space Research, Kyung Hee University, Yongin, Gyeonggi 17104, Republic of Korea
- ¹⁶ Institute for Space-Earth Environmental Research, Nagoya University, Nagoya 464-8601, Japan
- ¹⁷ Institute of Natural and Mathematical Sciences, Massey University, Auckland 0745, New Zealand
- ¹⁸ Department of Physics, University of Auckland, Private Bag 92019, Auckland, New Zealand
- ¹⁹ Department of Earth and Planetary Science, Graduate School of Science, The University of Tokyo, 7-3-1 Hongo, Bunkyo-ku, Tokyo 113-0033, Japan
- ²⁰ Instituto de Astrofísica de Canarias, Vía Láctea s/n, E-38205 La Laguna, Tenerife, Spain
- ²¹ Department of Astronomy, Graduate School of Science, The University of Tokyo, 7-3-1 Hongo, Bunkyo-ku, Tokyo 113-0033, Japan
- ²² National Astronomical Observatory of Japan, 2-21-1 Osawa, Mitaka, Tokyo 181-8588, Japan
- ²³ School of Chemical and Physical Sciences, Victoria University, Wellington, New Zealand
- ²⁴ Institute of Space and Astronautical Science, Japan Aerospace Exploration Agency, 3-1-1 Yoshinodai, Chuo, Sagami, Kanagawa, 252-5210, Japan
- ²⁵ University of Canterbury Mt. John Observatory, P.O. Box 56, Lake Tekapo 8770, New Zealand
- ²⁶ Department of Physics, Faculty of Science, Kyoto Sangyo University, 603-8555 Kyoto, Japan
- ²⁷ School of Physics and Astronomy and Wise Observatory, Tel-Aviv University, tel-aviv 6997801, Israel